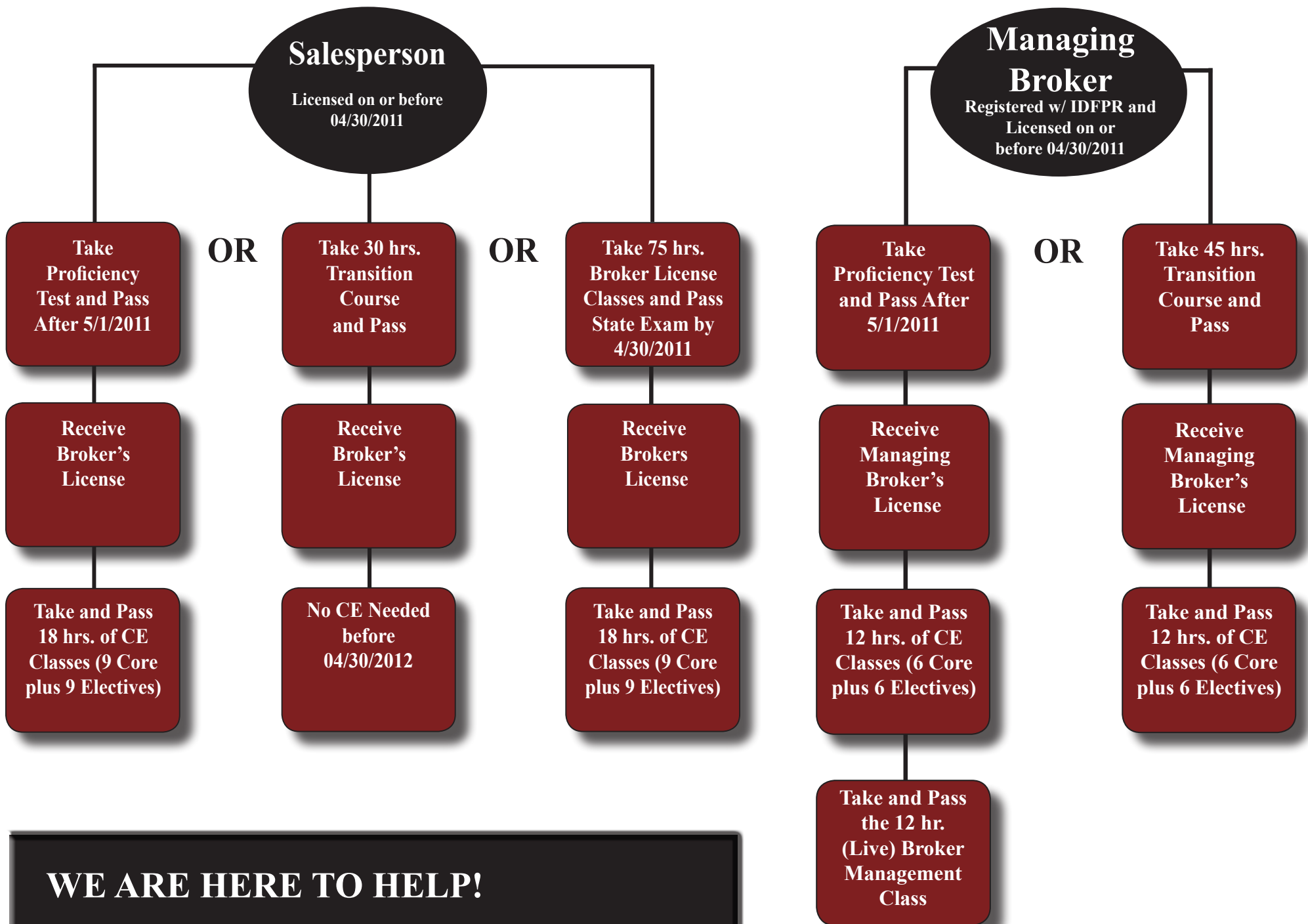




Let us help you *FLOW*
into the transition of
becoming a Broker or
Managing Broker!

Transition Period May 1, 2011 to April 30, 2012

Take a minute to check out the options:



WE ARE HERE TO HELP!

You have been assigned a Personal Transition Assistant (PTA) to be your personal guide through the new license law transition. Your Personal Transition Assistant will help with:

- *what options you have to transition your license*
- *what classes you have completed*
- *what classes you still need to take*
- *how CE figures into the equation*
- *in general ... your helping hand!*

Your PTA is assigned to you by your last name see below for who you should contact with questions at 688-8591.

*Call Ashley - Last Names A thru L
Call Valerie - Last Names M thru Z*

